

CAN'T YOU
GET THE
INFORMATION
FROM MY
FACEBOOK
PAGE?

The background of the slide is a stylized American flag. The top half is a dark blue field with white stars, and the bottom half is a white field with red stripes. The stars are arranged in a grid pattern, and the stripes are horizontal. The overall effect is a patriotic, high-contrast design.

Compactness

The Eye of the Beholder

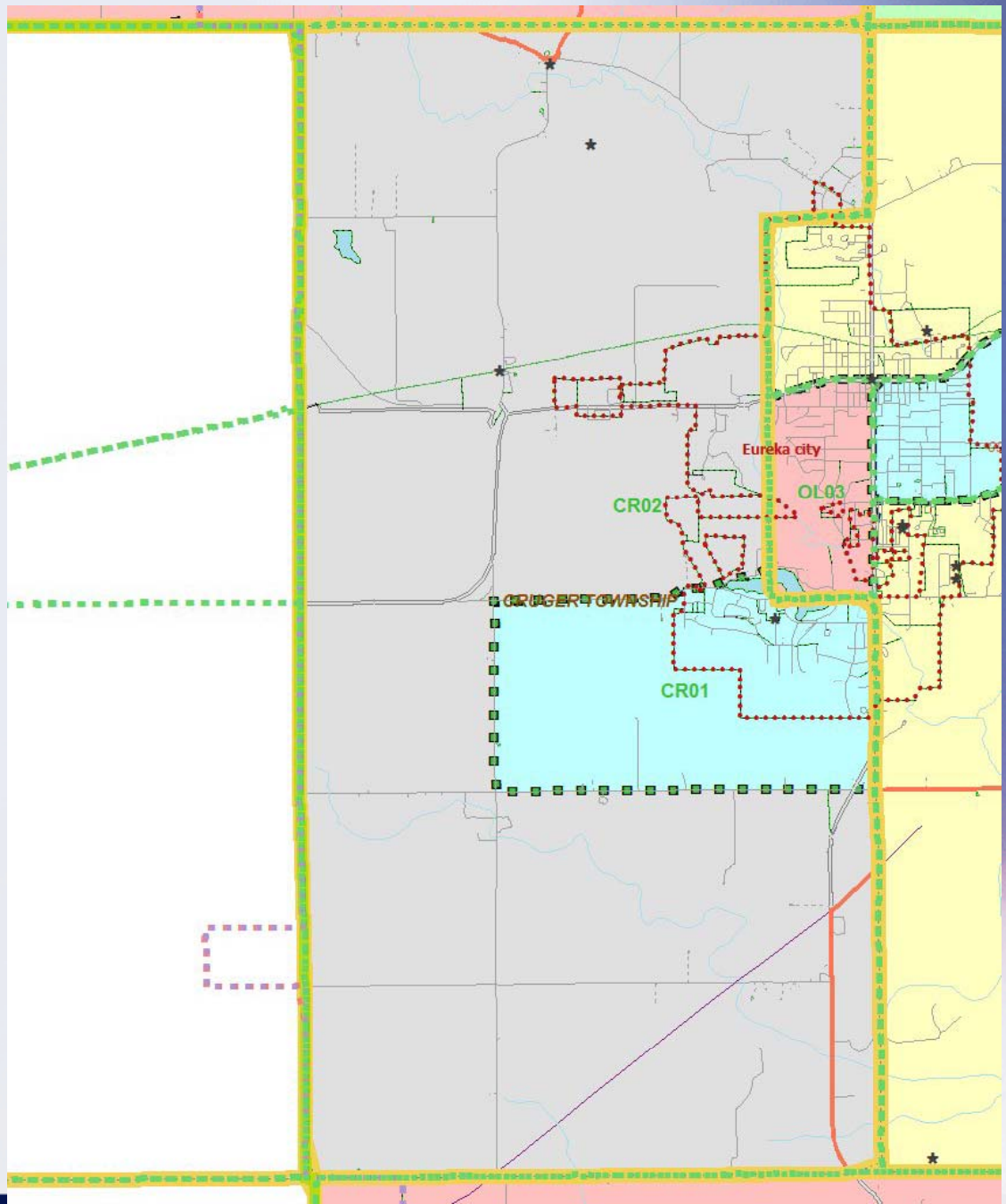
By Kimball Brace
Election Data Services, Inc.

Four Key Points on Compactness

- **There are no neutral district lines.**
- **Any numeric range of compactness scores can encompass countless alternative boundary plans.**
- **Every turn in a boundary line may,**
 - **OR MAY NOT,**
 - **have a meaning behind it.**
- **The first three facts above are NOT understood by:**
 - **judges who rule on these matters,**
 - **many journalists who report these matters,**
 - **some legislators who comment on these matters,**
 - **and many members of the general public.**

Compactness

- **Definitions**
 - **Round**
 - **No state is round**
 - **No County is a perfect circle**
 - **Very few cities are round**
 - **Defined by Shape**
 - **Impacted by lots of factors**



Find Non-Contiguous Areas



CR01, Area 1 (1,316.5 acres)

CR01, Area 2 (0.3 acres)

CR01, Area 3 (0.2 acres)

CR01, Area 4 (0.1 acres)

CR01, Area 5 (0.1 acres)

CR01, Area 6 (0.1 acres)

CR01, Area 7 (0.1 acres)

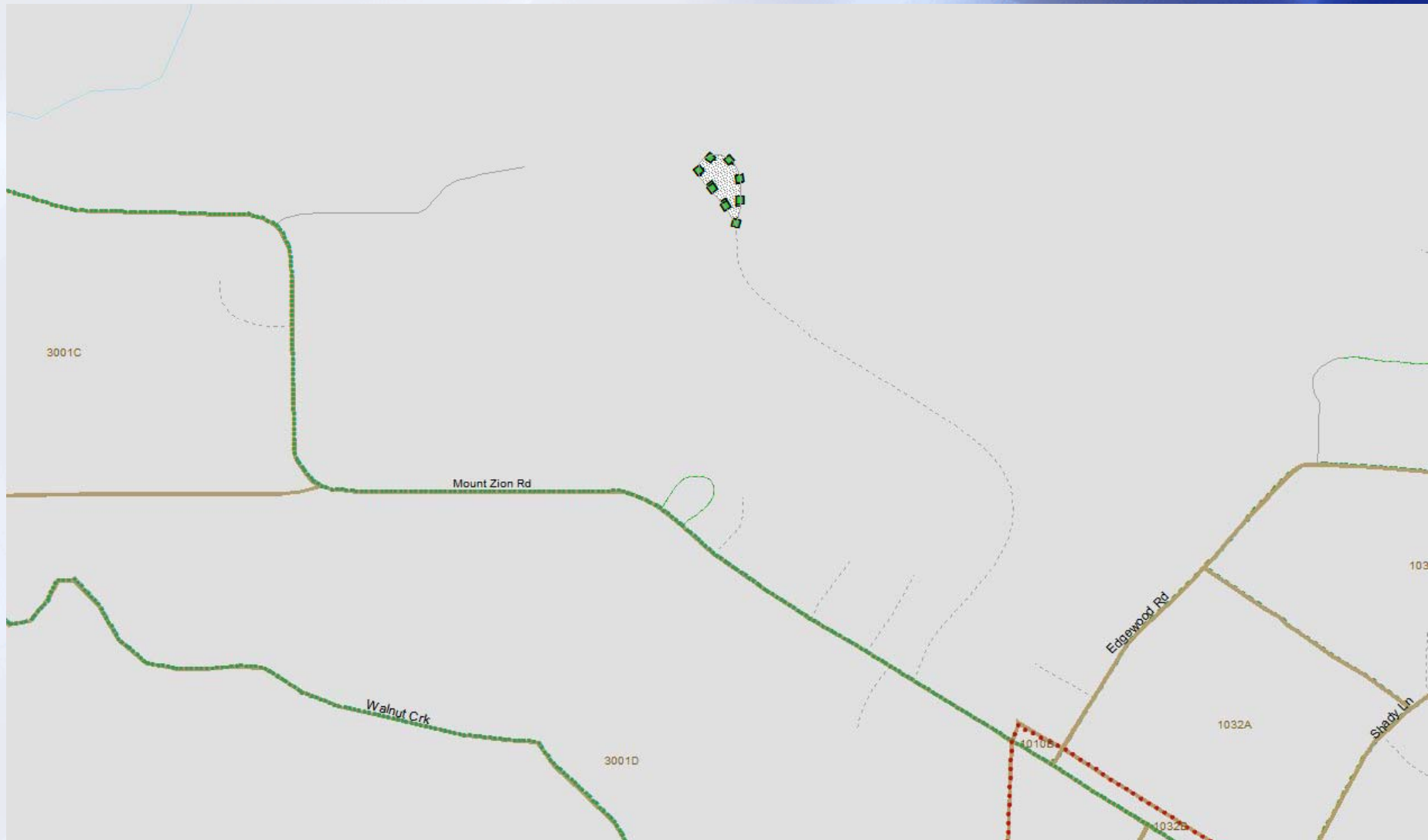
CR01, Area 8 (0.1 acres)

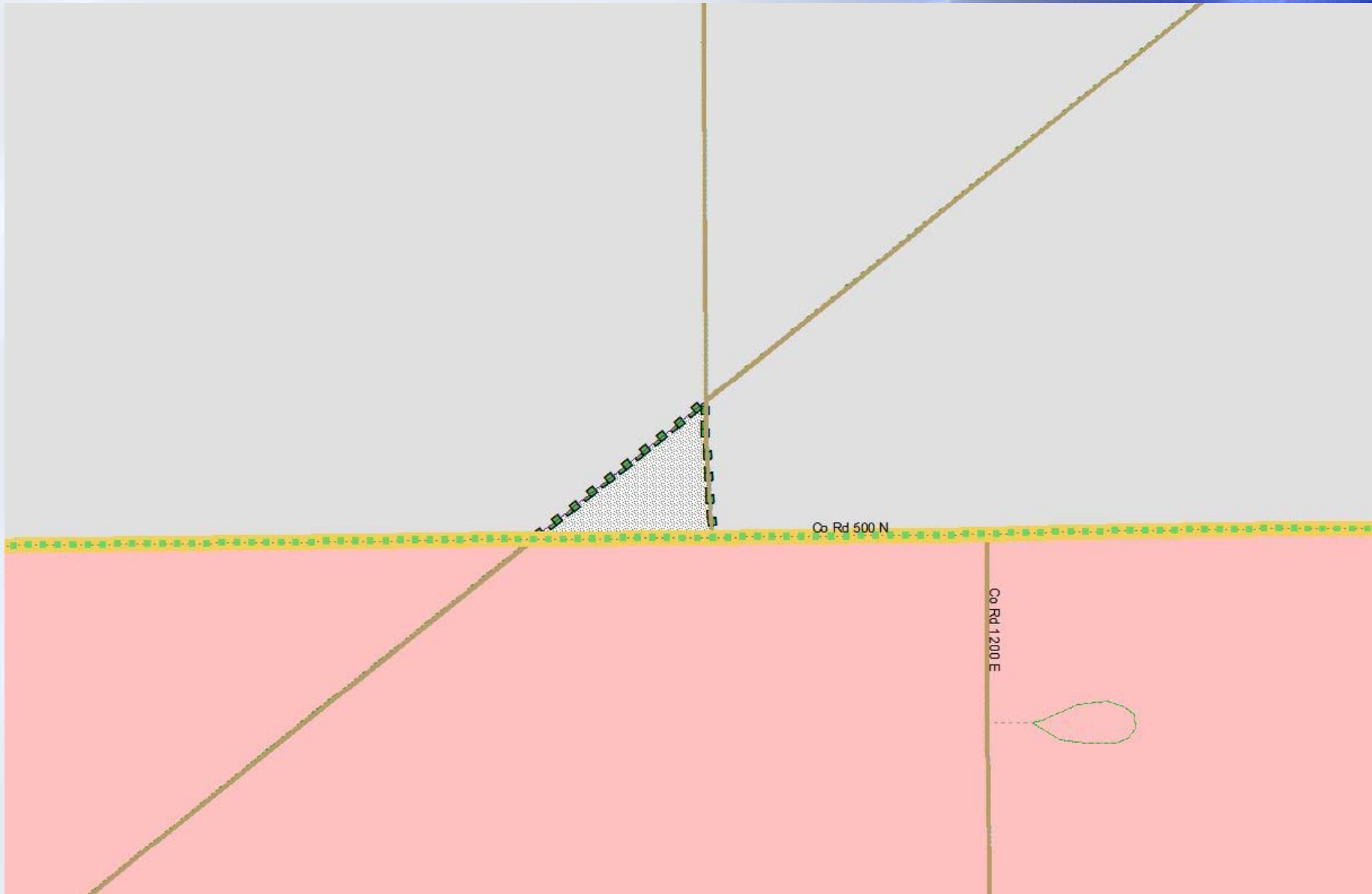
CR01, Area 9 (0 acres)

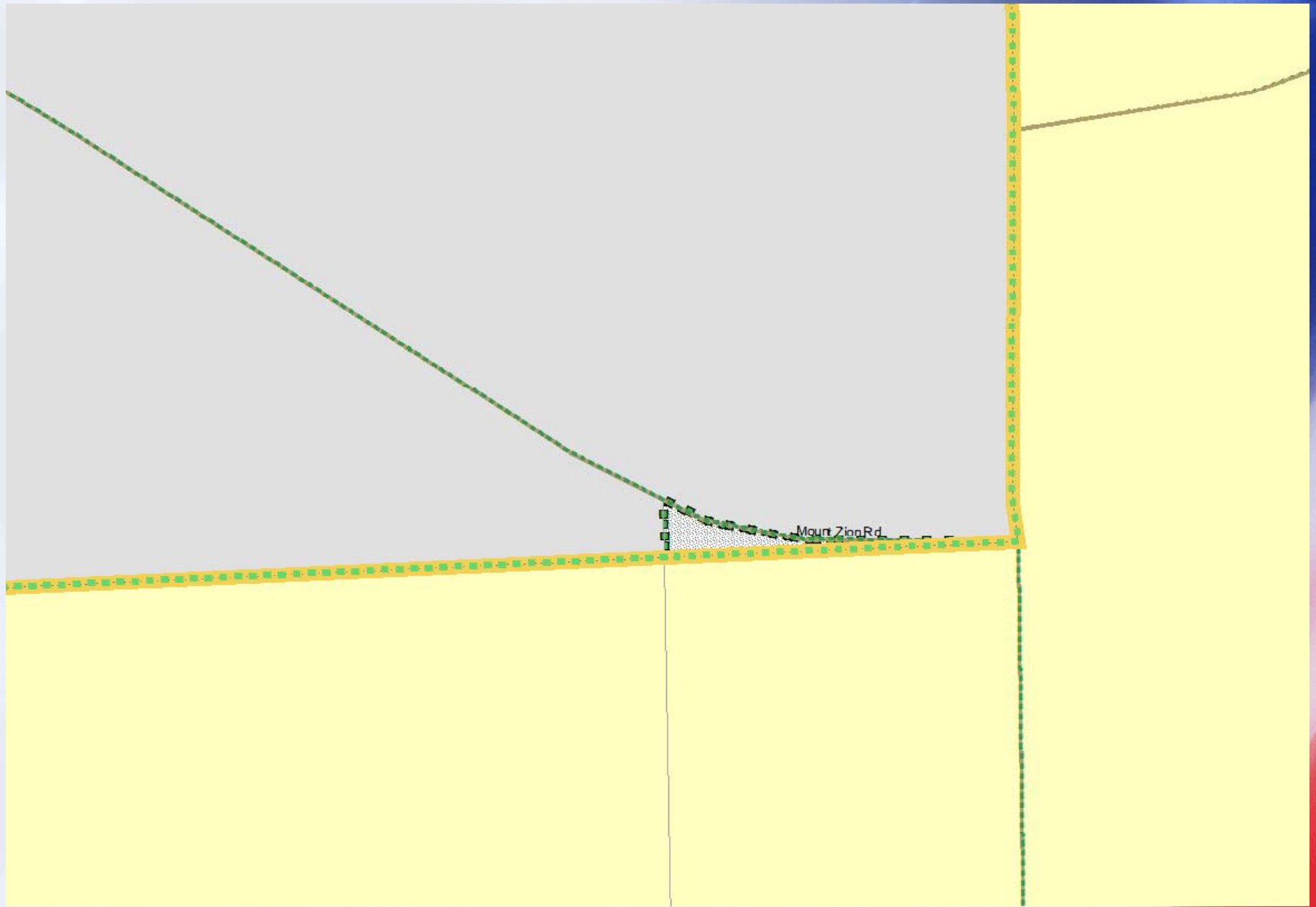
CR01, Area 10 (0 acres)

CR01, Area 11 (0 acres)

CR01, Area 12 (0 acres)

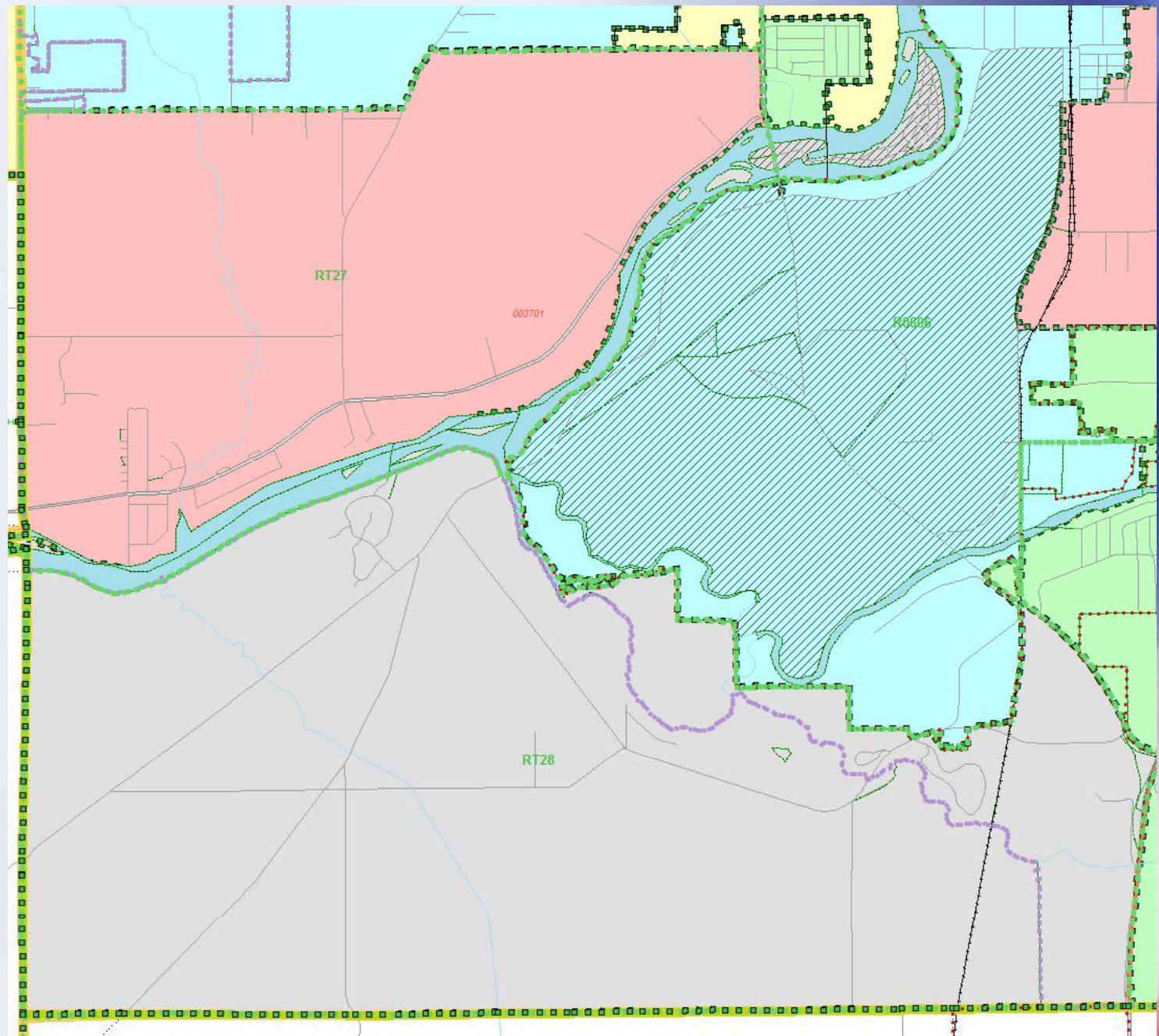


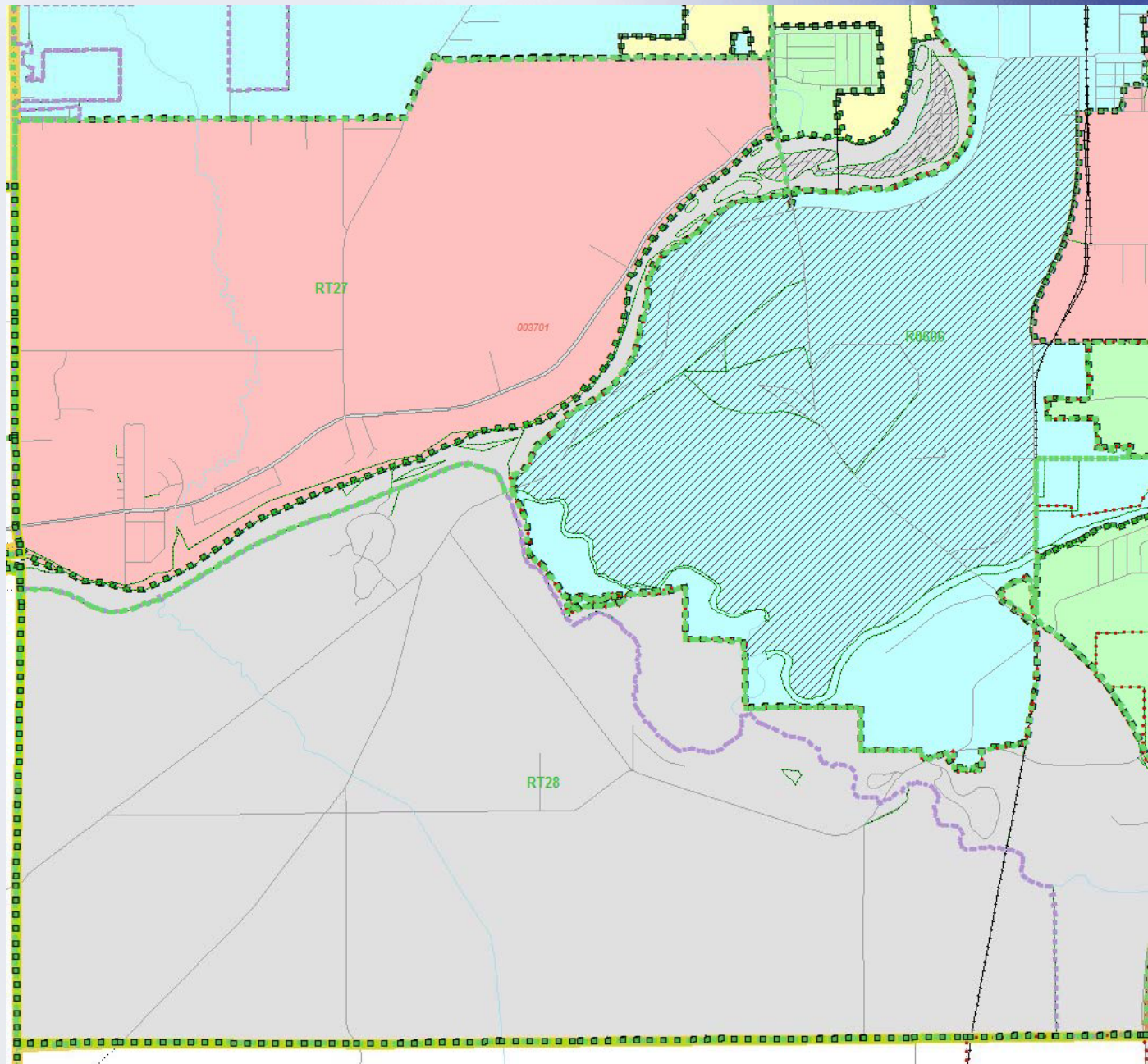




Geography impacts

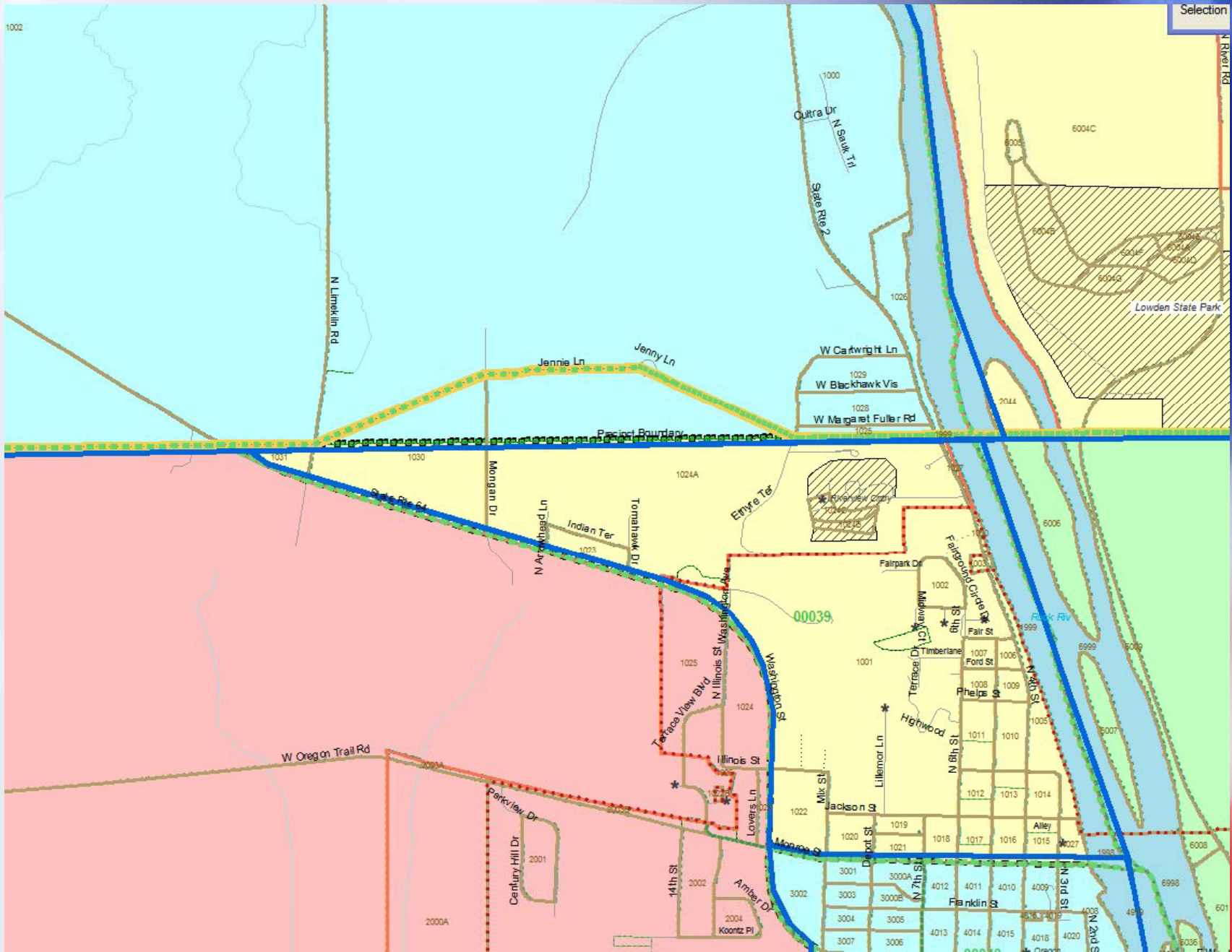
- **Pieces of geography used**
 - Square townships differ from cities and their annexations
- **Mountains**
 - Not seen on TIGER maps, but impact road patterns
- **Streams, Rivers & Bays**
 - What pieces of geography make up the river or bay
 - Islands on the coast
 - If they form the edge of a district,
 - compactness goes down
- **Outer boundary of the state**



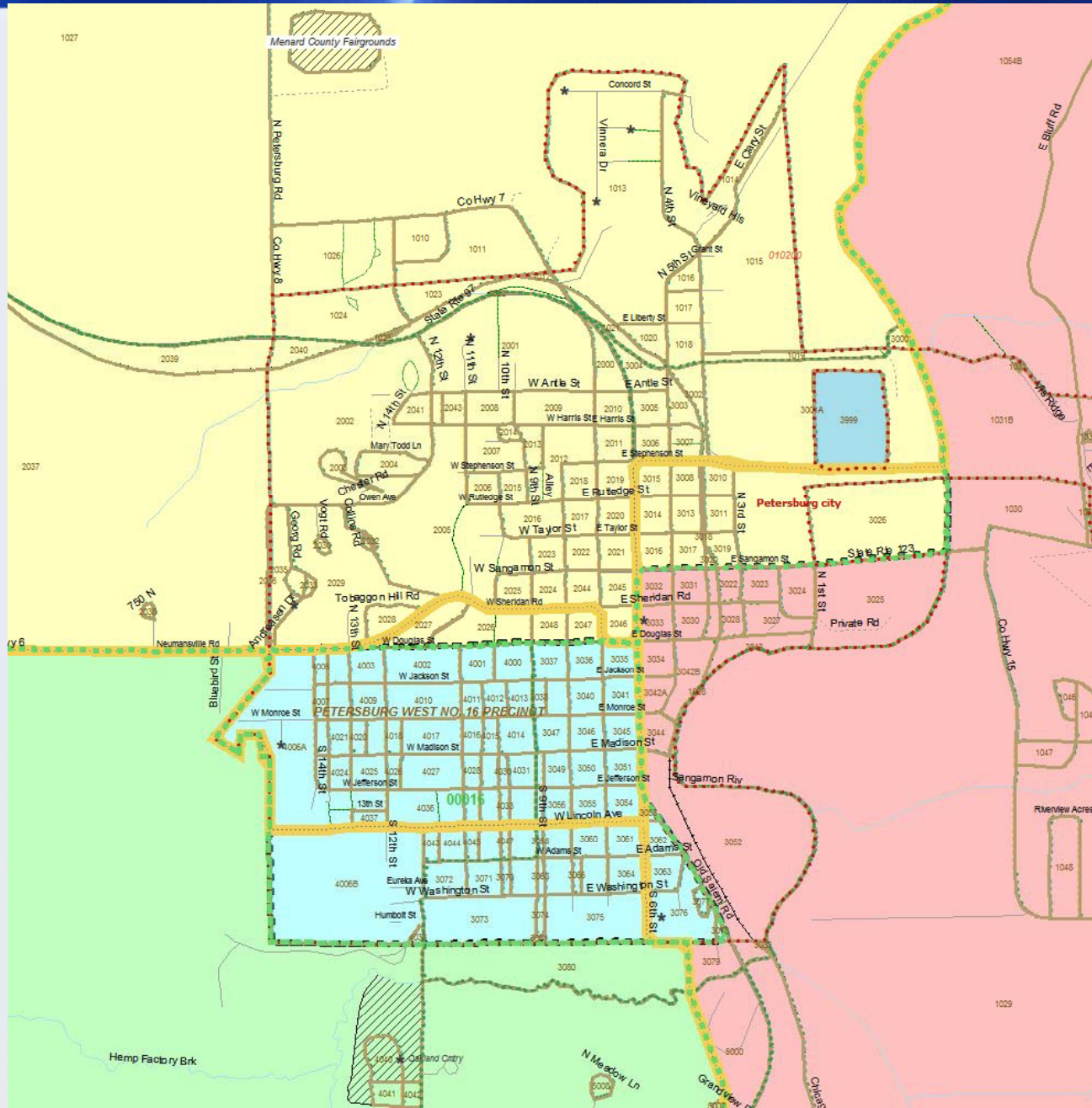


Problems in Bureau's TIGER files

- **Geographic boundary problems**
 - **While streets corrected or shifted, invisible boundaries remain large problem.**
 - **Townships**
 - **Cities**
 - **Could impact compactness scores, or even population counts**



Menard County Fairgrounds



Hemp Factory Brk

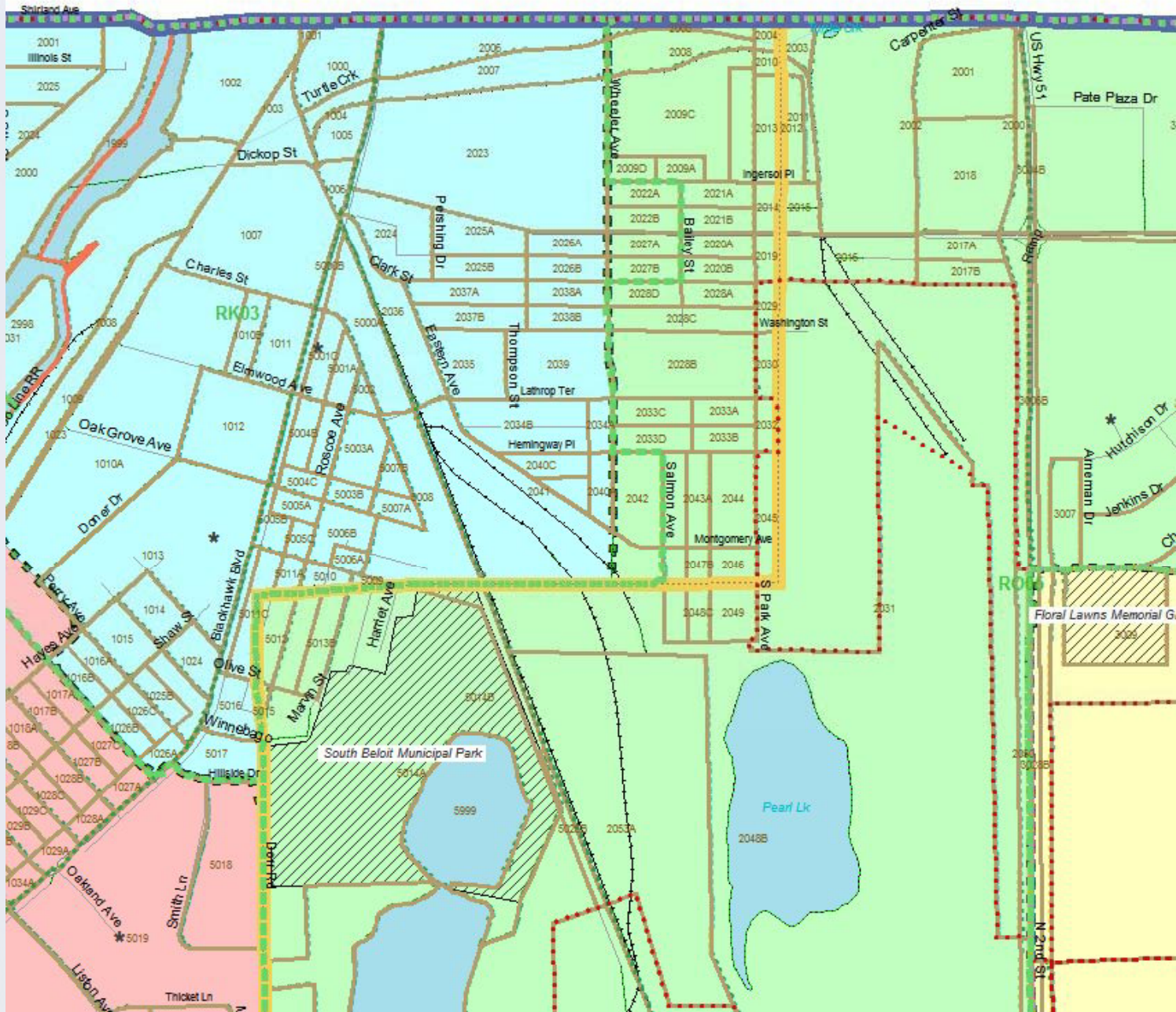
Menard County

N Meadow Ln

Grandview

Old Tavern Rd

Clinton



Compactness

It's in the Eye of the Beholder.

***And the Courts haven't helped with
the definition***

Olympic Command for Redistricting Season:

Let the Games Begin.

This will be _____'s fifth political Olympiad since the Warren Court forced America into the ideological straightjacket of one-person, one-vote 44 years ago.

Like the first four, it will feature outstanding legislative warfare, after which the combatants will go to court and ask a judge who won.

Gary Varvel
THE ADAMSMILLS CLUB
©2015 CHANGES.COM



Thank you



**Kimball Brace
President**

Election Data Services, Inc.

6171 Emerywood Court

Manassas, VA 20112

(703-580-7267 or 202-789-2004)

KBrace@electiondataservices.com or

KBrace@aol.com

www.electiondataservices.com